

To be continued

Musical success

Peter Pan in Spain

A special version of Peter Pan was exhibited with big success in Barcelona and Madrid. This classic of the universal literature of James M. Barrie was turned into the musical genre.

The Spanish version of Peter Pan is more loyal to the original one than others. The music, specially



The lost children living in Neverland.

created, contains new songs of pop-rock style, interpreted along with a live orchestra and special choreographies.

Responsible for illumination was lighting designer Ariel del Mastro. He designed the lighting plant for staging in Madrid and Barcelona.

Regarding to the lighting, it has never been something similar in Spain, specially in relation to mobile lights. 120 mobiles with motorized spotlights of Clay Paky and Vari-Lite were used. Additionally, lighting technician Alejandro Velázquez used conventional lighting, however it is mainly based on mobile spotlights. For controlling the musical Peter Pan there was a grandMA lighting console of MA Lighting. 60% of the show took place in Neverland,



One of the riskiest parts of the show, Peter Pan and his friends flying over the stage.

an island obviously surrounded by the sea.

Special effects

The best way to represent the sea is by means of fog combined with a marvellous series of laser. Laser was specially programmed for

this show and used for the sea waves effects.

The protagonist Peter Pan and his three friends Wendy, John and Michael flew over the stage and the audience. These extraordinary flights were designed by a team of specialists that worked together with David Copperfield. By means of lighting they illuminate the flying Peter Pan without illuminating the wires.

Network Signal Processor

Maximum network connectivity

The grandMA Network Signal Processor (NSP) allows for a complete integrated network solution by bridging the differences between the multiple defacto standards in existence today. An Ethernet network can be used to bridge longer distances and to provide more channel capacity on a single transmission line than a DMX universe has ever done.

The Ethernet network also brings more transparency into the signal flow and utilizes standard components from industry for an increased level of reliability.

Parameter Expansion

As long as the Advanced Network Protocol (ACN), the designated successor to the DMX standard, is not released it is vitally important to be able to run an DMX node - via Ethernet - on anyone of the known protocols today.

The Network Signal Processor, as well as any of the grandMA consoles, gives you the choice of two fully implemented protocols. For the new grandMA parameter expansion network the NSP plays a leading role in processing the external parameters for the master console as well as outputting up to four DMX universes at the same time. The Network Signal Processor requires grandMA version 5 software or above to support all operational modes.

For de-centralized DMX distribution networks the NSP converts

the incoming Ethernet data stream back into full-speed DMX 512 signals. Four individual DMX ports are available for output, and up to two of them might also be used for DMX input. The NSP can be controlled as DMX node via multiple network protocols. Currently supported are ArtNet from Artistic Licence and our own protocol MA-Net.

For maximum flexibility the NSP is built in a compact 19 inch

housing, only 1 unit high. The network signal processor requires no external power supply and can easily be configured with the built-in encoder wheel and four function keys.

Depending on the application the Network Signal Processor can in- and output your DMX channels from a EtherNet network, act like a DMX merger and booster or even expand your grandMA.

In the news

Latest grandMA references and projects in progress

Palace Theatre, Southend	UK
Cliffs Pavilion Theatre, Southend	UK
Royal Leamington Spa Centre	UK
The Israeli Opera Tel Aviv-Yafo	Israel
Shanghai Grand Theatre	China
Nanjing Cable Television	China
Shantou University	China
Norwegian Wood Festival, Oslo	Norway
Simple Minds	The Netherlands
ICF International Christian Fellowship, Zurich	Switzerland
HIM, Motörhead, Clawfinger and The Cure	Switzerland
Comedy Festival Winterthur	Switzerland
Who wants to become a millionaire (TV-Show)	Sweden
Rugby World Cup	Australia
Les Miserable, Berlin	Germany

To find out more : www.malighting.de



There are five operational modes when using the Network Signal Processor.

grandMAgazine

- autumn 2003 -

MA
LIGHTING



Successful Bon Jovi Tour with grandMA

Innovative LED- and video technique dominates new stage design



There were four grandMA for controlling the Bon Jovi Tour.

After two smaller concerts in Spain, the new Bon Jovi Worldtour "Bounce" kicked-off in Erfurt (GER) at the 25th of May. In the nearly sold-out Steigerwald Stadium in Erfurt, the two American Lighting Designers Doug "Spike" Brandt and JUSTIn Collie showed, what is possible with the latest A/V and lighting techniques.

The European stadium leg of Bon Jovi started with a completely new stage design. The satel-lite dishes from the first US leg had been retired, and the stage featured six moving high-resolution video screens, along with four bands of fixed low-resolu-

"It is the first time, that we use these consoles on a Bon Jovi Tour", explains Patrick Brannon, Lighting Director. "To be exact, we use two big grandMA consoles with 4,096 channels each, one grandMA ultra-light and a grandMA remote.

Multi-user environment

All grandMA consoles of MA Lighting are being used in a multi-user environment, which

enables us to do in parallel set-up, lamp-check and full-tracking backup."

The showdesign was created with WYSIWYG, so that the Bon Jovi concert in Erfurt was both at the same time: the last re-hearsal and the premiere. The operating of the show was accommodated by Lightpower's Oliver Rump.

Bon Jovi finished the European leg of the Bounce Tour in London on 28th June. All the equipment crossed the Atlantic to open the final American leg in Chicago on 11th July.



LED and video technique played an important role.

From the talent show directly to the concert hall

Pop Stars in the light of the grandMA

"Star Search" is a long-running success in the USA that has already created stars like Justin Timberlake, Britney Spears or Christina Aguilera. All over the world people are infected by the music-virus and are fascinated by the numerous TV talent shows. Some call them "Superstars", others "Idols". Their TV appearances are



Also the Dutch are infected by the "Idols" virus.

celebrated and their concerts are sold out. After having finished the TV marathon the dutch pop stars of the future met their fans for the first time in spring 2003.

In the event centre AHOY in Rotterdam the idols had to prove their powerful voices. Not only their voices are sign enough that they have the talent of being real stars, but also their performances were really impressive. Three grandMA consoles were used for the concerts to put the ten

finalists in a favourable light. "Due to the huge number of channels we could only realize this production with the help of a complete network system. The grandMA lighting consoles were used in a multi-user network environment", reported Jeroen Koggel from Rolight, Enschede. At first everything seemed to be a real challenge, but the actual software update of the grandMA helped to master it. The whole equipment was delivered by the Dutch rental company Metam.

Congratulations!

1.000 grandMA sold

Since 1999 MA Lighting sold over 1.000 grandMA consoles worldwide. Four years after introducing the console into the market, the grandMA today is more than only a lighting control desk. grandMA was able to set a new standard and grew up into a complete product family. Moreover together with the dimmer systems and the network equipment MA's lighting controls form a closed system, all coming from the same manufacturer.

5.000 dimmers sold

With its innovative products MA Lighting made history in the dimmer sector. The users from all over the world appreciate the excellent high density construction as well as the exemplary reliability of MA's digital dimmers. Not surprising that now 5.000 dimmers have been sold. Due to their high availability and practical orientation these high performance products have set another standard.

MA
LIGHTING

©MA Lighting International
An der Talle 26-28
33102 Paderborn · Germany
Tel: +49 (0) 5251 68 88 65-10
Fax: +49 (0) 5251 68 88 65-88
E-mail: sales@malighting.de
<http://www.malighting.de>



New MA Lighting catalogue

With the new catalogue MA Lighting shows its attractive product range in lighting controls, dimmer systems and network technology. In addition to the general technical information the catalogue contains primarily detailed product information. In the centre of attention are the three new products grandMA, dimMA and the network signal processor (NSP). The new MA Lighting catalogue is available now and can be ordered free of charge at MA Lighting: info@malighting.de

Being up-to-date

grandMA plays an important role in concert-touring, tradeshow, theatres, TV studios, clubs, cruise ships, etc. It combines approved operational modes with new ideas and latest technology. To inform you directly on any grandMA software-releases, MA offers a news service. Just visit the MA Lighting website and register for the grandMA news: www.malighting.de

RuhrTriennale 2003

The Temptation of St. Anthony

In its this year's peak season the RuhrTriennale celebrates a festival of arts. During the 30th april and the 12th october 2003 people interested in cultures get the chance of visiting 15 different venues in the Ruhrgebiet. In order to put the productions that are presented in old, fallow industrial halls and production plants in a favourable light, the lighting designers in the Gebläsehalle in Duisburg and in the Jahrhunderthalle in Bochum rely on grandMA consoles.

With his musical play "The Temptation of St. Anthony" the theatre- and opera director Robert Wilson also wanted to combine old industry culture with new theatre production in the Gebläsehalle.

The main characteristic features of his production were a bare stage, only a few props and a fantastical use of colours. With the help of 10 Clay Paky Stage Profile Plus and 2 Vari Lite VL1000 AS everything was used



One feature of the play is the fantastical use of colours.

in a very effective way. By using special light on the stage Robert Wilson and the lighting designer AJ Weissbard created an impressing theatre area.

Colours of an endless scope and a wonderful character had a stimulating effect on the imagination of the audience. Apart from that the colour was also means to show the inner confusion and emotional ups and downs of the holy Anthony himself. The english version of the play

shows the hermit who is fighting for assurance of his faith and who tries to resist the mortal and spiritual temptations in the egypt desert.

In addition to one grandMA console there were also about 70 ETC Source Four he worked with to realize his idea. The complete material is part of the equipment



Anthony is endangered by the temptation between chastity and sensuality. Photos: © Brinkhoff/ Mögenburg

installed in the hall. Besides the lighting design was also important for the religious effect of the room. This impression was underlined by the presented songs. The composer and texter, Bernice Johnson Reagon, took the audience on a trip through the great variety of the afro-american musical scene.

Tour through Europe

All compositions are based on Gustave Flaubert's "The Temptation of St. Anthony". After its visit in Germany the ensemble continued its tour through Europe.

There are also some other productions of the RuhrTriennale in the Jahrhunderthalle. In the former gas power station in

Bochum three grandMA consoles are used. "Especially for the manifold programme of the RuhrTriennale the control desk had to be up to the high expectations in the theatre. At the same time the handling had to be easy when we are working with intelligent lights. During the last RuhrTriennale we could already gain much experience on the grandMA. This was one of the main reasons why we decided to take it", said one operator of the Triennale team.

When the plans for the Triennale were approaching the decision for a hybrid lighting console was already made. In addition to own productions they will also present guest performances. The RuhrTriennale will reach its peak season this year. All together 129 different events are planned to attract the people enthusiastic for culture.

Xbox at Electronic Entertainment Expo

Four grandMAs controlled more than 300 moving lights

The Electronic Entertainment Expo is the computer and console gaming industry's most important annual gathering. Held at the Los Angeles convention center, the 2003 show was the site for one of the most "cutting edge" temporary installations of a networked lighting control system.

The 100' x 350' Microsoft Xbox and PC Games booth was designed and managed by TPN, Seattle. Alex Berry designed the lighting with Gary Radakovich. The rig of about 300 moving lights was controlled by 2 grandMA consoles, outputting a total of 16 universes of DMX and all provided by Christie Lites Seattle. DMX was output from 4 Artistic License Ether-Lynx DMX Nodes, which were located on a catwalk next to the dimmer rack, high above the booth. This



On one of the biggest stands at the show: The Xbox booth from Microsoft.

meant that a single CAT 5 Ethernet cable ran from each console to the catwalk for all DMX data and console communication. In addition to the two main consoles, there were two additional grandMA consoles also on-site and connected into the same network. This allowed for up to 4 people to be programming at the same time, in a Multi-user environment. Alex Berry: "The whole trade-show booth process was made simpler with the new V4 software. Having the ability to have 2 or 3 guys concentrate on a single area, all at the same time, makes such a difference on a booth like this".

In addition to the grandMA consoles, each programmer had his own Pocket PC running "Wi-Fi" and acting as a wireless remote. So from any location on the booth floor they could log into a console and update presets, run and store cues, check the patch and even send messages between consoles.

grandMA micro

New console for maximum reliability

With the grandMA micro MA Lighting has designed one of the most compact moving light controllers ever for more than just entry level applications. Additionally this console includes all features of many conventional lighting consoles. Therefore this mid range desk is suitable for small concerts, lighting on tour, effect lighting for fairs and exhibitions as well as for smaller theatres and TV-studio use.

The grandMA micro offers 1024 individual parameters for smart control of conventional dimmers, moving lights from the built-in library or self-created fixtures of any kind. The micro includes all its components in a most compact desktop housing with everything built in; no external power supplies, processor units or monitors are required. It is based on a reliable industrial computer board which was design to resist even stronger environmental influences.

The grandMA micro opens up to the world EtherNet communications for the transmission of DMX data and for the use of its free software companion grandMA 3D. It has got an open

link to many of the control protocols already in use on the market. The grandMA micro is based on a fully integrated industrial computer mainboard with all necessary interfaces on-board - all in a solid and robust housing. It uses major parts from the future-oriented grandMA software and is therefore compatible with the common grandMA showfile format.

A new generation

The console offers a real channel and fixture controller with dedicated digital encoders and customizable screen layouts. A new generation of user interfaces



The new grandMA micro console

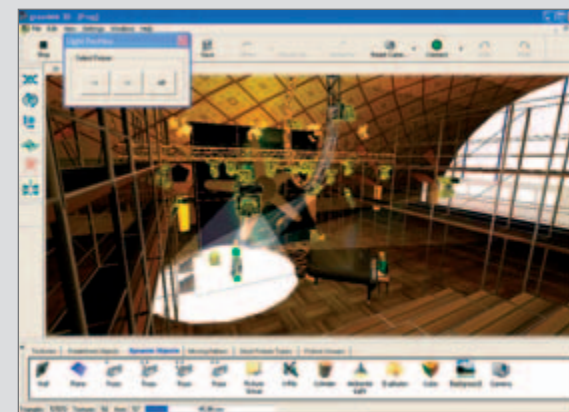
are all operated by the most tactile built-in touch screen. The software with its built-in editors for the fixture library, dimmer/ fade profiles and effect forms does not require any external PC software for modifications to the show itself.

The playback faders and buttons of the grandMA micro console can be remotely controlled by any DMX source via a separate DMX input port. This also allows any simple DMX console to be used as an extension wing. With all its features the grandMA micro closes the gap in function-

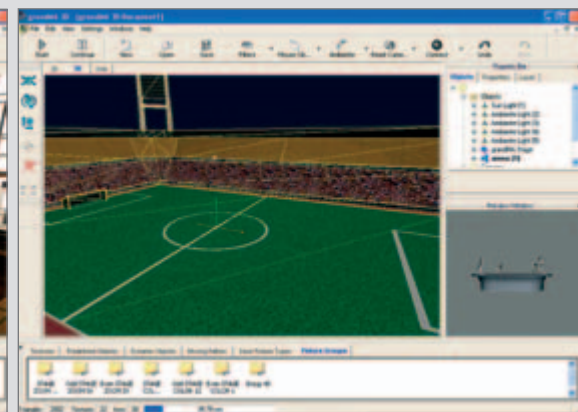
ality and price between the grandMA ultra-light and the Scanc Commander.

Closing the gap

MA Lighting has designed this new console around the new industrial single PCB computer with a Geode 266 MHz processor chip. This computer has all necessary links to the external world on-board from a mouse and keyboard connection to a auto sensing 10/100 Mbit/s EtherNet port.



All the show data can be received "online" from the grandMA console and displayed in real time.



grandMA 3D with new user-interface

The software enables real-time visualization on a standard PC

MA Lighting's latest development - the PC software package grandMA 3D - is a new user interface, created for the visualization as well as the design of three dimensional stage layouts in conjunction with the grandMA product range. grandMA 3D gives

grandMA 3D allows a wizard guided design and set up of any custom stage or scenery layout with 2D drawing facilities and a library of basic graphical elements. Multiple windows with front/ side/ top view can be opened and updated at the same time. All the stage elements can be positioned in x/ y/ z directions and may also be rotated around the various axes. Custom textures for the surface of these elements can be imported from any bitmap

file or may be chosen from the built in library. The internal structure of grandMA 3D is strictly object oriented and allows to define group of elements for easy set up and design. A truss bar with connected fixtures can than be moved, rotated and repositioned in one go.

The outstanding follow mode allows you to move beams for selected fixtures to dedicated positions like a real follow spot or

direct access to the consoles' fixtures with the new follow mode which acts truly bidirectional for both XYZ movement and selection. It is freely available for download from MA Lighting's homepage: www.malighting.de.

simply remote focus these lights. The actual pan/tilt parameters are fed back to the grandMA console and can be stored in cues or presets.

Easy set up and design

grandMA 3D may also be used to do a graphical selection of fixtures on the grandMA console

and vice versa. Any drawing object, fixture or camera may now be remotely controlled by DMX channels in its XYZ position and rotation parameters on screen directly from the console. The grandMA 3D software runs on an external PC or notebook computer but shares all database and fixture library with the connected grandMA console or grandMA offline-editor where both software programs may be running on the same PC.

grandMA system certification - new chances for business

Not only the technology, but also the human being itself has to meet the professional requirements of today's market. With the international grandMA certification course MA Lighting creates the best possible know-how for the grandMA consoles and network solutions by qualifying all professional operators. This certification sets a worldwide quality standard, that is not only identifying the operator as an expert for the grandMA systems, but also makes his use absolutely essential.

Finding solutions

Main part of certification course is the appropriation of complex facts for finding solutions for different tasks. Compared with conventional operating courses, the hardware concept of the consoles, the network topology and the show concept are of first prominence. The programming of shows is another important topic, whereas every participant is requested to be already an experienced grandMA operator and to fulfil the high entry requirements.

After a few weeks of practical training with additional technical support the final exam for the grandMA system certification takes place.

www.malighting.de/certification