

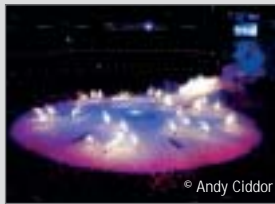
grandMA Magazine

– spring 2006 –



XVIII Commonwealth Games opening ceremonies grandMA controls more than 32,000 DMX channels

With a groundbreaking Opening Ceremony that had impressive fireworks and aesthetic illumination, Melbourne city celebrated the start of the XVIII Commonwealth Games. On March 15th 2006, Her Majesty, Queen Elizabeth II, declared the Games open at the Melbourne Cricket Ground (MCG). The stadium was crowded with approximately 80,000 people; worldwide more than 1,5 billion people turned on the TV; and also 100,000 people came to watch the show from the banks of the Yarra river and from other sites.



© Andy Ciddor



© Andy Ciddor

Spectacular multimedia opening ceremony

Creative director Andrew Walsh developed an event that has been described as spectacular, glittering, surreal, and an elaborate extravaganza. The lighting design included up to 1,000 moving lights and required more than 32,000 channels. Lighting Designer Mark Hammer needed power and reliability to control the massive lighting system and his choice was grandMA multimedia consoles. A total of six grandMA's were located in the control room; two grandMA full-size consoles plus two full-size tracking back-up consoles and a grandMA light console plus

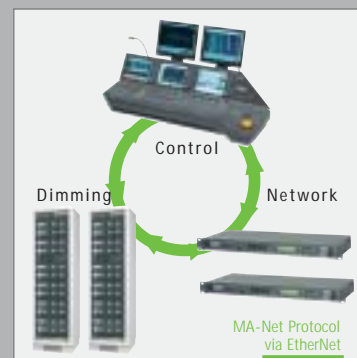
another for tracking back-up. In addition a grandMA full-size console was used for remote plotting. Show Technology supplied the lighting equipment.

Crew

Lighting Designer:
Mark Hammer
Associate Designer/Programmer:
Paul Collison
Assoc. Designer Broadcast:
Rohan Thornton
Programmer:
Jason Fripp
Megan McGhan
Technical Director:
Nick Eltis
Production Manager:
Philby Lewis
Project Manager Bytecraft:
Paul Rigby
Project Manager:
Chameleon Brad Gander

The MA system solution

With the grandMA lighting consoles, the Network Signal Processor (NSP) and dimMA, the digital installation dimmer, MA Lighting offers a fully integrated system that offers unrivalled solutions for sophisticated projects with complex system requirements.



All system components communicate via MA-Net (Ethernet), so that the different types of signals do not need to run on different systems. (However, the components of the integrated MA system are also extremely powerful when used as stand-alone products each having their own direct DMX output.)

Next to the products and system elements, MA Lighting offers a variety of further renowned products for control, dimming and DMX processing.

Dirty Dancing – European Premiere in March 'Theater Neue Flora' in Hamburg specified MA Lighting products

The 'Theater Neue Flora' in Hamburg, Germany is ready to open the doors for the first night of the new musical Dirty Dancing by the end of March 2006. Most people will remember the one and only dance film of the 80's and now they get the chance to watch a fascinating transfer from film to stage. The theatre had used advanced equipment for the predecessor 'Dance Of The Vampire', but Hamburg's new musical star needed a lot more than this. Sophisticated control solutions is a 'must have' these days and additional dimmers were needed. Lighting designer Tim Mitchell was free to choose the equipment he likes best. He and programmer Sebastian-Philipp Herbst made good use of the outstanding capabilities of grandMA multimedia consoles.

The lighting system included new curved radius. high class equipment consisting of more than 380 conventional fixtures and 115 moving lights and also lots of video equipment. The video projections were shown as classical back projection on curved hung gauze as well as on a custom made motorized and moveable LED-wall, consisting of very small LED-cells arranged to match a

all the channels and therefore increase speed and performance over the whole system. Another benefit was that the NSPs could be placed at dimmer city and shared the existing networking infrastructure of the theatre.

For the conventional lighting fixtures used at Dirty Dancing additional and flexible dimmer components were needed. MA Lighting's digital touring dimmer racks were chosen because of their functionality and reliability.



A grandMA full-size, a grandMA replay unit and four NSPs run the lighting show

grandMA - the DVD

Now available in Spanish and Italian

grandMA – the DVD is invaluable as a reference library for the grandMA system, covering all consoles in the range. It contains a Quick Start introduction, and has advanced tutorials so you can work at your console or on the offline software while viewing the DVD. The DVD also contains software downloads, manuals and other helpful documentation.



Order your free DVD online:
www.malighting.de

A day at the races – grandMA at Royal Horse days in Oman

Every fifth year the Sultan of Oman, Qabus Ibn Said Ibn Taimur al Said invites all the good people of his nation to celebrate the national holiday. The Mydan Al Fath stadium seems to be the only suitable place for an event of tremendous proportions and extraordinary oriental spirit. More than 600 camels, 1,500 horses and 1,200 musicians came to pay respect to the Sultan and be part of the party. To

illuminate a place like this, a reliable control system is the prerequisite. Lighting designer Jerry Appelt trusted in grandMA multimedia consoles.

His lighting design included two huge stages with fully loaded lighting systems as well as stadium and architectural lighting. With countless moving wash lights and numerous searchlights he created big pictures larger



A XXL-event with 19 DMX universes

than life, but absolutely matching for an area this wide. A total of 19 DMX universes were needed to distribute all data throughout the stadium and therefore MA's Network Signal Processors were absolutely necessary. The grandMA desks and the NSPs were located at Front of House and DMX data was transferred via fibre optic cabling.

Programmer and operator Thomas Giegerich and Sascha Mattes as well as Jerry Appelt made good use of their three grandMA full-size multimedia consoles set in multi-user session and in full-world mode. So everyone had full access to the whole lighting system. Jerry Appelt's trust in grandMA was rewarded by a smooth and perfectly running show.

Sinatra's comeback – At Palladium Theatre, London

Eight years past his death in 1998 "Ol' Blue Eyes" is back on stage and larger than life. The London Palladium presents a stunning musical celebrating the life and career of the legendary entertainer Frank Sinatra. More than 3.5 Million Euro were spent on state-of-the-art technologies to get the show on stage. To control the multiple video installations the desks of choice were grandMA multimedia consoles.

To let Sinatra duet with live singers, a 24 piece orchestra playing his music live and accompanied by numerous dancers, large scale projections on the back drop and on moveable LED screens were used. The video content is a combination of digitally reconstructed 35 mm

private film footage from the fifties and film clips of Sinatra in concert. Nancy Sinatra gave the permission to use these films and supported the production with previously unreleased material from their archives. Director David Leveaux created a perfect show merging and synchronising what happens live with virtual imagery.

A grandMA full-size multimedia console rented from British supplier Neg Earth executed the cues for the media server, receiving a MIDI time code from the audio desk at Front of House. The Lighting design was created by Andrew Bridge, Tom Pye developed the set design.



© Tristram Kenton

grandMA at the Palladium, London

Danish Radio DR Byen – MA system solution set up

The Danish Broadcasting Corporation (DR Byen), Copenhagen, has a long history and is still the biggest media company in Denmark. The new building is a state-of-the-art multimedia complex including seven broadcast studios and also a concert hall. MA Lighting provided a system solution with integrated grandMA multimedia consoles, digital dimming and networking technologies.

system dimMA for permanent installation. dimMA features the reliability and functionality of the renowned MA "touring dimmer" and in addition advanced networking capabilities such as bi-directional communication between the dimmer and the desk. The heart of the dimMA system is the NDP (Network Dimmer Processor) and the active link between different Ethernet signal standards, the



DR Byen's new home under construction

dimMA digital dimming system and the DMX world. For DR Byen the dimMA system distributes 1100 dimmer channels.

General supplier including all MA related equipment was the Italian company DeSisti, well known for their TV and Film related tungsten and

One major task made the project DR Byen very special: to implement the integrated network for all parts of the lighting control system into the common used network infrastructure shared by all broadcast offices as well as all sound and lighting departments. For the most flexible use several products of MA Lighting's grandMA range were specified. The bill of MA related equipment included three grandMA full-size, three grandMA light, six grandMA replay units, nine NSP's (Network Signal Processor) and the new digital dimming

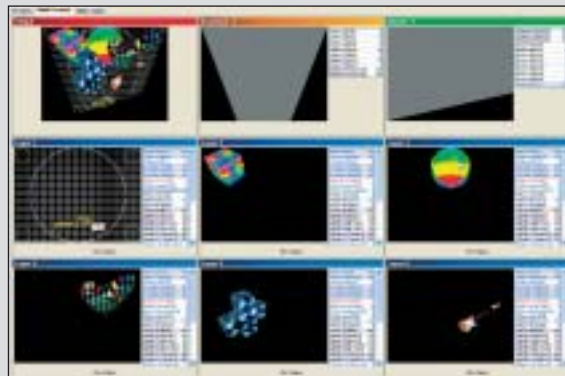
daylight fixtures, rigging solutions such as pantographs and drop arms, motorized rigging and rail products.

While the studios from the first building unit are partly in use, building the new home for DR Byen is not totally finished yet, but by the end of 2006 it will be completed. The second phase of moving house will affect news and sports and the last ones to make the move will be National Danish Television.

grandMA video – new functionality with release 1.28

MA Lighting's software based media server grandMA video was released in 2005 and gained success in many applications from theatre to rock 'n' roll to TV. With the release of grandMA video version 1.28 at proligh+sound 2006 the three new key features for grandMA video are Admin, Multi-Screen Preview and Soft-Edge Blending, to enhance the media server's performance.

grandMA video admin is an additional application automatically installed with grandMA video and a useful tool for monitoring and accessing any video station connected to the MA-Net. All video stations are shown



multi-screen preview

in one single menu and within this central element all parameters can be easily adjusted. Once easily connected via MA-Net, all changes in parameters or values can be instantly set.

As a fully integrated application into the MA-Net, grandMA video supports the bi-directional communication with the grandMA multimedia console. The console's

interface already supports content browsing including movie clip previewing and thumbnail views in presets. Content can be added onto the server, browsed from the console, previewed on the console and/or live video

output for the designer's approval and then added into the show quickly and easily without requiring any re-boots of the server.

Multi-Screen Preview

Right now the newest software version of grandMA video is

equipped with the helpful multi-screen preview function. This menu previews all of the six content layer (resolution 2,048 x 2,048 pixel), a master layer, the keystone layer and the output layer on a single screen arranged in 3 x 3 windows. Within the layer windows the content or



soft-edge blending

function (e.g. shaping) is shown and parameters and values can be accessed by using the control menu.

Another advanced feature is the soft-edge blending function, used to assemble a seamless

projection with multiple projectors in use. The soft-edge layer features four blades that can be positioned independently using one channel. An additional channel is used to control the intensity of the blades. grandMA video supports this functionality for still images and videos clips as well.

Outstanding features

All these new functions, in combination with previous released ones such as four live video inputs, the keystone effect (using eight parameters to correct the perspective of the image in X- and Y-direction), beam shape effects with the master layer and the comfortable FoH blind editing function directly from a grandMA console, make grandMA video a much more powerful tool.



MA Lighting Media Server hardware – A sophisticated all-in-one solution for most professional projects

grandMA video is a software-based media server. The quality of grandMA video depends on the windows XP computer running the software. For smaller projects a common and inexpensive PC system will be great. However, users in more high-end professional events and projects have requested more than this. They asked MA Lighting to build a hardware solution for their grandMA video application that gives it the best possible performance and reliability.



To be most effective, the MA singlecore CPU, 2 GB RAM, three Lighting media server hardware hard disks 160 GB, a Nvidia graphic card with 256 MB RAM as

well as a DVD-writer and a floppy drive. The system contains Windows XP Professional software, grandMA video software, the grandMA video content library and the grandMA onPC. After a final test of a 24-hour

Highest Performance and Reliability

burn-in routine the grandMA video hardware solution is ready for use.

The hardware solution features a 4U 19" housing that meets highest industry standards and comes built into a special ABS

Amptown fight case. The request for 'road proof' reliability leads towards special treatment of the

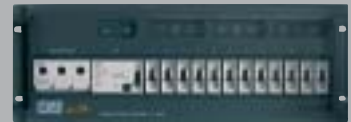
Road Proof Construction

different computer parts of the unit. So a double very-high-quality power supply is used. All connectors and cabling are specially secured; and the motherboard, graphic cards, PCI-slots are strongly fixed and sealed. All gold contacts are treated with special contact lubricant. The hard disks will be joined together and fitted with a soft buffered block into the housing.

dimMA compact –

space saving modularity

The new dimming solution for fixed installations is the 4U 19" rack version dimMA compact featuring 12 channels with 3 kVA each. Nine modules of the 4U 19" rack unit can be compiled to a total of 108 dimmer channels. Also available: a 4U 19" rack unit with 6 channels with 5.7 kVA each.



The dimMA compact is equipped with MCB and RCD and comes with an excellent rise time of 180 µs – the same as the renown MA digital touring dimmer.

All units are linked via CAN-bus protocol controlled by MA Lighting's NDP (MA Network Dimmer Processor). The NDP is the active link between the different Ethernet signal standards, the dimMA compact units and the DMX world. Bi-directional communication over Ethernet on MA-Net protocol with the grandMA multimedia consoles enables the user to monitor and configure the dimmer system directly at the desk.

v-Base yoke –

Precise movement for heavy weight projectors



The Danish company Brother, Brother & Sons presents the v-base motorized yoke for heavy weight and powerful video projectors such as the Barco SLM 12+ with its 11,500 ANSI lumens. In combination with MA Lighting's media server hardware the v-Base yoke is the perfect solution for professional use with a wider projection distance. In addition to its precise movements (PAN 410° / TILT 280) the v-Base yoke also features built in electronics. The electronic board is linked with the console via DMX512 and transfers the data to the RS232 protocol internally to remotely control the projector's focus from the lighting desk. Another advanced feature is the optional available DMX output that reads out e.g. PAN/Tilt data from sensors. This data can be played back to the console and then used to synchronize keystone corrections for movements.

A special cabling for the video signal cables is fed through the yoke's axle shafts to ensure reliable data transfer.

From Westend to Broadway

Latest grandMA references and projects in progress

German Music Award ECHO Berlin
 Staind World-Tour
 Gran Casino Aranjuez Madrid
 Universal Studios Orlando
 BlueManGroup Las Vegas
 Gwen Stefani US-Tour
 Neil Diamond US-Tour
 Luis Miguel US-Tour
 Saturday Night Live New York
 Jersey Boys New York
 Cirque du Soleil Montreal
 Ottawa's Parliament Hill Ottawa
 Commonwealth Games Melbourne
 Tokyo Motorshow Tokio
 Royal Horse Days Oman
 Burj Al'Arab Dubai

To find out more: www.malighting.de

New website – www.malighting.de

MA Lighting is pleased to announce the launch of the new website with lots of technical details and information. The new look gives you a faster overview



and even better functionality to find the information you want. The improved download and support area contains everything from software updates, manuals, detailed product information and available accessories. The website also keeps customers and friends informed about the grandMA product family used at different productions and venues. In addition, Case Studies are available for download.

The website is currently online in English and German languages and very soon, a Spanish and Italian version will be released.



MA Lighting International
 An der Talle 26-28
 33102 Paderborn · Germany
 Tel: +49 (0) 5251 68 88 65-10
 Fax: +49 (0) 5251 68 88 65-88
 E-mail: sales@malighting.de
<http://www.malighting.de>

© MA Lighting International

Gold medals shine a light on grandMA – Multimedia consoles used at XX. Olympic Winter Games 2006 in Turin

From 10th until 16th of February 2006 the XX. Olympic Winter Games were held in the capitol of Italy's beautiful region of Piemonte. Almost every night gold medals won by great sportsmen and women were presented at a ceremony in the heart of Turin, followed by a celebration which included concerts of various artists and fireworks. All this took place at the Medal Plaza, located directly beside the Piazza Castello right in front of the Royal Castle.

The consoles of choice for controlling these complex lighting systems were grandMA multimedia consoles.

Lighting Designer Giovanni Pinna used a grandMA full-size and two grandMA light desks to control the massive lighting system for Medal Plaza. He had to control more than 300 moving lights, countless PARs, fresnels, profiles, strobes and LED fixtures for the different areas on and off stage. One grandMA light served as back-up while the second one took control of the LED fixture installation on stage.

But Medal Plaza was not the only

place where grandMA multimedia consoles were in use. Lighting Designer Giovanni Pinna also designed the lighting for the location at Palavela, where the figure skating competitions took place, as well as the sky jump area at Pragalato and the Freestyle area at Sauze D'Oulx. For Palavela, operator Marco De Nardi made good use of a grandMA full-size including a NSP and a grandMA light as back-up. Two grandMA micros met all requirements of the other two outdoor locations.

grandMA multimedia consoles were supplied by Italian MA distributor GMep Molpass srl.



Lighting Design: Giovanni Pinna

FIFA world cup 2006 – final draw with grandMA

More than a 400 million people in the whole world watched the FIFA's World Cup 2006 Final Draw show on TV. Celebrities of sports, politics and community were also part of the show and obviously had a good time there. This TV mega-event took place at Messegelände Leipzig in Germany in December 2005.



A stunning set design was created by Jürgen Hassler of Hassler Entertainment Architecture and perfectly illuminated by mo2 with lighting designer Manfred "Ollie" Olma. Using LED's, moving lights and video elements Hassler and Olma developed a coherent concept that created a mood, both aesthetic and dignified, with views that looked great on TV and for the audience as well.

The design required the highest demands in networking technology and lighting control. The desks of choice were grandMA multimedia consoles because of their outstanding network capabilities. Only the products of MA Lighting's grandMA family were able to handle the huge amount of DMX channels and provide secure and synchronous data transfer from the first to the last channel of the entire lighting system. Yet another aspect was very important: it was necessary to split the lighting system in to separate parts, so several pro-

grammers could work independently on different parts of the show.

Four grandMA full-size consoles and four NSPs (Network Signal Processor) were linked via Ethernet running on MA-Net and set into a multi-user session. One desk was used as master while the other three consoles were defined as slaves with certain user-profiles specified in MA-Worlds.

380 Pulsar ChromaPanel were used on the show, which were programmed and controlled in a separate MA-World by Michael Baganz working on his own desk. The next console was set to an MA-World specified to control all the moving lights and used by programmer Manuel Da Costa. The third one was set up to handle all the lighting for the camera and audience lighting. Operator Mathias Hagel was responsible for the programming.

Procon Multimedia AG, Hamburg, supplied all the lighting equipment and the trussing.

Altin Portakal – Turkish film festival at historic theatre

Every year Turkish film enthusiasts turn their interest towards the Altin Portakal film festival to see which international and national movies receive the honourable award, the "Golden Orange". The 42nd anniversary gala of the event took place at the historic theatre in Aspendos and no other than French actress Catherine Deneuve received the special lifetime achievement award. grandMA multimedia consoles met the requirements for this large event and architectural illumination.

The Turkish company Focus Ltd. made good use of a grandMA full-size and grandMA onPC with a NSP as back-up solution for the stage lighting, controlling numerous moving lights and conventional lighting fixtures. A grandMA ultra-light was used to control the architectural lighting using colour changers and searchlights. Two 48 channel MA digital touring dimmer racks were also in use. The design was created by Mehmet Kubilay, while lighting director Metin Biroglu run the show together with programmer Savas Yucel.

The area between Sheraton Voyager Antalya Hotel crossing Beach Park and up to Hill Side Su Hotel was declared as the festival area this year. The nominated films were shown at Cine Bonus AVM. The best three movies received the Golden Orange statue during a spectacular gala show at the amphitheatre were the Turkish stand-up comedian Cem Yilmaz had his appearance.



Gala-lighting with grandMA